



SPORTS DAY 2026

Well done to everyone who took part and support the event so brilliantly.

This week, Cliff Park Ormiston Academy came together for a fantastic Sports Day, celebrating teamwork, determination and the very best of our CARE values.

Students took part in a wide range of track and field events, representing their houses with pride and enthusiasm. From sprint races and relays to long jump, throwing events and team challenges, it was brilliant to see so many students giving their best, supporting one another and showing real resilience throughout the day.

A particular well done goes to all students who competed. Sports Day is always about more than the results. It is an opportunity for students to show community, aspiration, resilience and excellence in action and this year's event was a great example of that.



2 WEEKS LEFT TO RACE TO THE FINISH

With just two weeks left of term, every day really does count. Our brilliant students have shown fantastic commitment, resilience and pride in their attendance this half term, and we want to keep that momentum going right through to the end of the year.

Keep showing up, keep giving your best, and keep finishing the year strongly. Good luck everyone!

<p>EVERY FULL WEEK</p>	<p>IMPROVED ATTENDANCE</p>
<p>=</p> <p>£30</p> <p>AMAZON VOUCHER</p>	<p>=</p> <p>£20</p> <p>AMAZON VOUCHER</p>

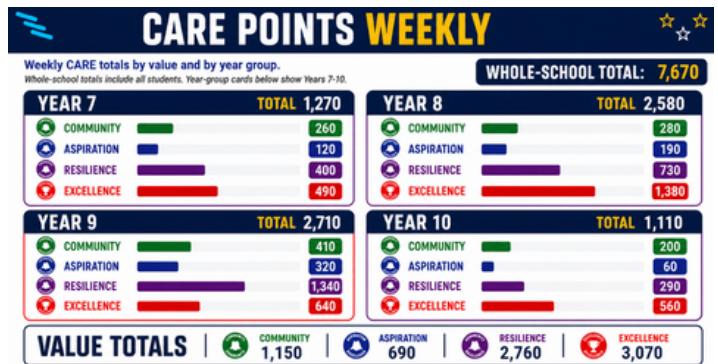
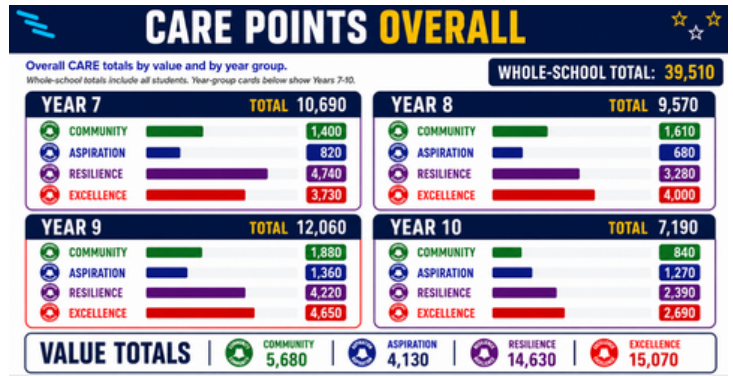
CARE TOKENS STARTING TO MAKE A BIG IMPACT

Our students have achieved an impressive 7,670 CARE Points this week, contributing to an outstanding overall total of 39,510 CARE Points so far. This reflects the positive choices students are making every day, both inside and outside the classroom. A special well done goes to Year 9, who are currently leading the overall totals with 12,060 CARE Points.

Across the academy, the strongest value totals so far are:

- Excellence** – 15,070 points
- Resilience** – 14,630 points
- Community** – 5,680 points
- Aspiration** – 4,130 points

These totals show how often our students are being recognised for going above and beyond. Well done everyone!



CLIFF PARK CONNECT

From this term, Cliff Park Connect will move to a fortnightly publication. This will allow us to share a fuller round-up of academy news, student achievements, upcoming events and key updates for families.

We want each edition to continue celebrating the fantastic things happening across Cliff Park, while also ensuring parents and carers receive the most relevant information in a clear and timely way.

Important updates will still be shared separately when needed, but our main newsletter will now be published every two weeks.

Thank you for continuing to read and support Cliff Park Connect.

SUMMER UNIFORM UPDATE

As we are expecting a further period of hot weather, we will be continuing with our temporary summer uniform arrangements until the end of term.

During this period, students should attend school wearing:

- A white school shirt
- School trousers, skirt, or plain navy/black shorts
- Sensible school shoes

Students do not need to wear:

- Blazers
- Jumpers
- Ties

Please ensure your child brings a refillable water bottle to school each day and applies sun cream before arriving. Staff will continue to encourage students to drink water regularly and make sensible use of shaded areas during social times. Thank you for your continued support.

ACTIVE IN MIND MENTOR TRAINING AND COLLABORATION



On Thursday 25 June, a group of Year 9 students took part in an exciting mentor training session as part of our new partnership with the Active in Mind Project, delivered in collaboration with the Youth Sport Trust and funded by the Bank of America.

The programme is designed to support the wellbeing of younger students by training Year 9 students to become peer mentors. These mentors will go on to deliver physical activity sessions with students in Year 7, using sport, play and positive relationships to help raise awareness of how to manage stress, worries and anxiety.

We were delighted to welcome Steve Frew, athlete mentor and former Commonwealth Games gold medallist, who delivered an engaging three-hour training session with our Year 9 students.

During the session, students explored leadership, mentoring skills and the important role physical activity can play in supporting mental health and emotional wellbeing.

In the afternoon, our newly trained Year 9 mentors had the opportunity to meet and work alongside Year 7 students from the nurture group. This collaborative session gave both groups the chance to begin building positive relationships ahead of future Active in Mind sessions.

This marks the beginning of an exciting journey for our students. We look forward to seeing the positive impact the programme will have in supporting wellbeing across our school community.

Thank you Mr Palmer for organising this super opportunity for our students.

YEAR 10 INTO 11 RESIDENTIAL - EXPRESSIONS OF INTEREST

Norfolk, Overstrand Hall
Epic adventures on the Norfolk Coast
PGL Overstrand Hall
Norfolk Coast residential adventure

A first residential opportunity for this year group
Students will build confidence, independence, teamwork and resilience through a packed programme of outdoor activities, evening events and shared experiences before Year 11 begins in earnest.

What's included

- ✓ 2 nights full-board accommodation
- ✓ All meals and evening activities
- ✓ PGL activities with qualified instructors
- ✓ Coach travel to and from school

Estimated cost
£91 - £102
per student, depending on numbers
Deposit: £40 to secure a place

Eligibility expectations
Places are not guaranteed. Students are expected to maintain high standards of behaviour and 98% attendance from now until the trip.
Attendance and behaviour will be monitored.

Next steps
Please return the residential letter and register your interest by the deadline. Students can also join the fundraising group to help reduce costs.
Register interest now

REGISTER. ATTEND. IMPROVE. GET INVOLVED.

Year 10 students have now been given letters about the future Year 11 Residential to PGL Overstrand Hall. Parents and carers are asked to read the information carefully and return expressions of interest by the deadline. Places are limited and will depend on students meeting the attendance target.

BE HERE. EARN THIS!



100% ATTENDANCE
ON THE LAST **TWO WEEKS** OF TERM

YOU WILL
EARN A

BEACH DAY!

WITH ORGANISED
GAMES AND FUN!



-  BEACH VOLLEYBALL
-  SAND CHALLENGES
-  TEAM GAMES
-  PRIZES & MORE!



ON THE LAST DAY OF TERM,
YOU WILL GET A
**VOUCHER FOR A
FREE ICECREAM!**



ATTEND TODAY, **ACHIEVE TOMORROW**, ENJOY TOGETHER! 

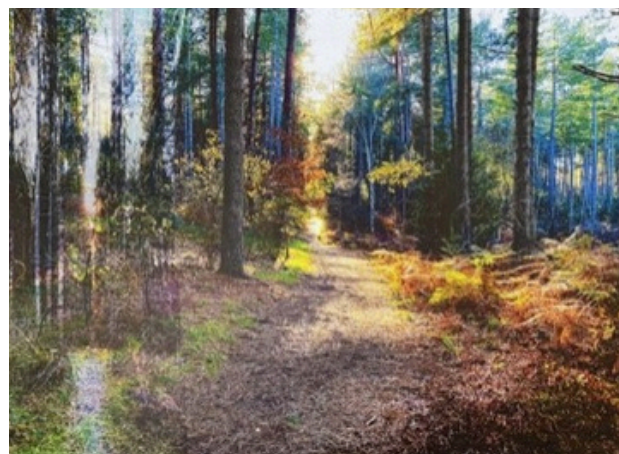
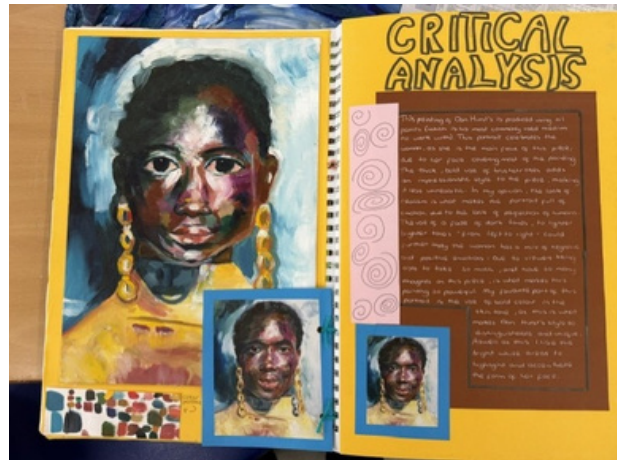
★ **BE PRESENT. BE PROUD. BE REWARDED!** ★

GCSE ART & PHOTOGRAPHY GALLERY

We are delighted to share a selection of fantastic GCSE Art work from our students. The pieces showcase creativity, skill and imagination, and reflect the hard work students have put into developing their ideas, techniques and final outcomes. From detailed observational work to bold and expressive personal responses, the gallery is a real celebration of student talent.

A selection of the work is also currently on display in reception for visitors, staff and students to enjoy.

Well done to all of our GCSE Art students - we are incredibly proud of the quality of work produced.



IMPORTANT DATES FOR YOUR DIARY

Date	Event
Thursday 9th July	Y11 Prom – Great Yarmouth Racecourse
Friday 17th July	End of Summer Term
Wednesday 2nd September	Year 7 & 11 Students Start of Term
Thursday 3rd September	Year 8, 9 and 10 Students Start of Term