



# CONGRATULATIONS TO THE YEAR 11 CLASS OF 2026

Well done, Class of 2026 — you have done yourselves and your school proud.

Congratulations to our Year 11 students on completing their GCSE examinations.

This is a significant milestone, and we are incredibly proud of the resilience, maturity and determination they have shown throughout the exam period. Their conduct has been excellent, and they have approached every exam with focus and commitment.

We would also like to thank parents, carers and staff for the support, encouragement and guidance they have given Year 11 throughout their time at Cliff Park Ormiston Academy.

We wish every student a restful and well-deserved summer break, and we look forward to celebrating with them on results day.



## WELL DONE TO ALL OUR STUDENTS WHO ARE RACING TO THE FINISH.

Our brilliant students have shown real commitment, resilience and pride in their attendance this half term. Every student who achieved 100% attendance this week will now be entered into a prize draw to win a £30 Amazon voucher. **Good luck everyone!**

EVERY FULL WEEK

=

**£30**

AMAZON VOUCHER

IMPROVED ATTENDANCE

=

**£20**

AMAZON VOUCHER

# OAT EAST DANCE 2026 - REGIONAL CHAMPIONS

A huge congratulations to our talented dancers, who delivered an outstanding performance at OAT East Dance 2026. We took 17 KS3 students to CNS in Norwich to compete in this regional competition, performing six routines across the day.

Our students achieved a brilliant set of results: 1st place – Senior Group Dance; 1st place – Junior Duet; 2nd place – Junior Group Dance; and the Spirit Award for supporting every other performance.

This is our second regional victory this academic year, following Ormiston's Got Talent 2026. Well done to every student involved, and thank you to the staff who made the day such a success.



## AVIVA SUPPORTS WORK EXPERIENCE

We were delighted to welcome professionals from Aviva to support our Year 10 students as they prepare for their work experience placements.

Students took part in sessions on writing strong CVs and presenting themselves with confidence, learning directly from industry professionals.

A huge thank you to the team from Aviva for giving their time and expertise to support our students.



## SUMMER UNIFORM REMINDER

As we are expecting a period of hot weather, we will be making a temporary adjustment to our uniform expectations.

During this period, students should attend school wearing:

- Plain black school trousers or a plain black school skirt
- A white school shirt
- No tie
- No blazer

Full PE kit should still be brought to school on the days it is needed for PE.

Please can parents/carers support us by ensuring students arrive in the correct summer uniform each day. Students should also bring a refillable water bottle and are encouraged to drink regularly throughout the day.

## CPOA ALLOTMENT IN FULL BLOOM



Our academy allotment is looking fantastic this term and is now in full bloom. What was once a small growing space has become a vibrant area full of colour, life and care.

Students have worked hard to plant, water and develop the allotment, learning about patience, teamwork and responsibility. It is a brilliant example of our CARE values in action, supporting wellbeing and connecting students with nature.

A huge well done to everyone involved in making the CPOA allotment such a success.

## MEMORIAL GARDEN TAKES SHAPE

This week, staff contributed to the development of our memorial garden by placing their handprints onto the flower beds.

This simple but meaningful gesture represents the care, commitment and community spirit at the heart of Cliff Park Ormiston Academy. Each handprint is a reminder that our memorial garden is being created together.

The garden will be a place of remembrance, reflection and quiet pride. Thank you to all staff who contributed to this special moment.



## YEAR 10 INTO 11 RESIDENTIAL - EXPRESSIONS OF INTEREST



**Norfolk, Overstrand Hall**  
Epic adventures on the Norfolk Coast  
**PGL Overstrand Hall**  
Norfolk Coast residential adventure

**A first residential opportunity for this year group**  
Students will build confidence, independence, teamwork and resilience through a packed programme of outdoor activities, evening events and shared experiences before Year 11 begins in earnest.

**What's included**

- ✓ 2 nights full-board accommodation
- ✓ All meals and evening activities
- ✓ PGL activities with qualified instructors
- ✓ Coach travel to and from school

**Estimated cost**

**£91 - £102**  
per student, depending on numbers  
Deposit: £40 to secure a place

**Eligibility expectations**

Places are not guaranteed. Students are expected to maintain high standards of behaviour and 90% attendance from now until the trip.

Attendance and behaviour will be monitored.

**Next steps**

Please return the residential letter and register your interest by the deadline. Students can also join the fundraising group to help reduce costs.

**Register interest now**



**REGISTER. ATTEND. IMPROVE. GET INVOLVED.**

Year 10 students have now been given letters about the future Year 11 Residential to PGL Overstrand Hall. Parents and carers are asked to read the information carefully and return expressions of interest by the deadline. Places are limited and will depend on students meeting the attendance target.

## GREAT EXAMPLE: BEYOND THE CLASSROOM



Name: Marcel

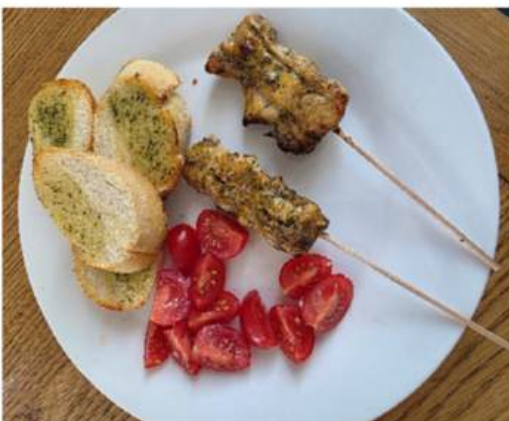
Subject: KS3 Hospitality

Beyond the Classroom task:  
I would like you to make a dish (breakfast, lunch or dinner) for your family.  
This links directly to community and contributing at home.

Ways to respond:

1. You can add a picture of the completed dish
2. You can write down what you made and a comment from someone who ate the dish.

Due date: 19 June 2026



## GREAT EXAMPLE: BEYOND THE CLASSROOM

Year 10 Fashion Design Talent: Sophie Henderson

We are delighted to showcase the fantastic Fashion Design work of Sophie Henderson in Year 10.

Sophie has demonstrated real creativity, precision and flair through her recent design work, showing an excellent eye for detail and a growing confidence in her artistic choices. Her designs reflect careful thought, originality and a strong understanding of how fashion can be used to express identity and style.

It is wonderful to see Sophie developing her talents and taking such pride in the quality of her work. She should be incredibly proud of what she has produced.

Well done, Sophie, a brilliant example of creativity, aspiration and excellence.



# IMPORTANT DATES FOR YOUR DIARY

Date	Event
Thursday 21st May	Online Parent Forum
W/C Monday 29th June	Work Experience Week
Thursday 9th July	Y11 Prom – Great Yarmouth Racecourse
Friday 17th July	End of Summer Term

**GREAT YARMOUTH BASKETBALL CLUB**

# JUNIOR TEAM TRIALS

2026/27 SEASON

**SATURDAY 4 JULY** **SCHOOL YEARS 5-13** **FREE TO ATTEND**

U12	U14	U16	U18
09:30 - 11:30 SCH. YRS 5-7	11:00 - 13:00 SCH. YRS 8-9	12:30 - 14:30 SCH. YRS 10-11	14:00 - 16:00 SCH. YRS 11-13

**BOOK NOW**  
[www.gybasketball.co.uk/book](http://www.gybasketball.co.uk/book)

**BRING THE ENERGY!**

PLAYERS DO NOT NEED TO BE THE FINISHED ARTICLE - WE WANT ATTITUDE, EFFORT AND COACHABILITY