



THRIVE

CREATE

DISCOVER

ACHIEVE

Welcome to our academy

Cliff Park Ormiston Academy is a very special school where your child will be safe, happy and where they will achieve success.



At Cliff Park Ormiston Academy we strive for Excellence Everyday– in big moments of academic achievement and extra-curricular success as well as in small moments of self-discovery, perseverance, respect and community.

We strive for excellence in everything that we do. We provide a warm, welcoming, orderly and inclusive school environment, where 'Everyday Excellent Behaviour' is an expectation. We believe in doing the everyday things well; Respect, tolerance, courtesy and co-operation. We make no excuse for our high expectations. Our dedicated staff are committed to developing students and themselves and work exceptionally hard to support our students to become imaginative, confident and happy young people with an enthusiasm for learning.

The wide range of knowledge and skills gained through our curriculum, is a gateway for pupils to progress to the next phase of their education, training or employment. We recognise that all of our students are different: they have different academic starting points, different challenges and influences, and different goals. We will ensure your child has the foundations of knowledge and understanding required to engage with, and pursue, their learning to whatever level they may wish. We ask that our students approach their studies with hard work and enthusiasm. We encourage our students to be ambitious for themselves, their family and their community and aim high in the classroom, in extra-curricular activities and in life beyond school.

Students are organised into year groups and tutor groups that create a climate in which they can confidently develop. We are proud of the exceptional pastoral care we provide, care that is tailored closely to the needs of individual students.

The academy is a member of Ormiston Academies Trust [OAT]. As a national Multi Academy trust OAT have an excellent track record in providing high-quality support to our academy which in turn, enables our staff to sustain the high standards, high expectations and high levels of academic achievement that we target everyday.

We will work tirelessly to ensure your child is safe, happy and successful.

Mr H French, Principal.





"I am immensely proud to be Chair of Cliff Park Ormiston Academy, which is an important member of the Ormiston family of 43 academies nationally.

Ormiston cares passionately about providing the best learning opportunities for young people so that they not only achieve the highest grades, but also have the opportunity to develop skills through extra-curricular activities and extended learning, with a mission of making the biggest difference, both inside and outside of the classroom.

Cliff Park is a successful academy with excellent results in a safe, caring environment.

It is important that we play a key role in the local community, sharing our resources and expertise with others, but also that parents and carers are fully involved with us in their children's learning.

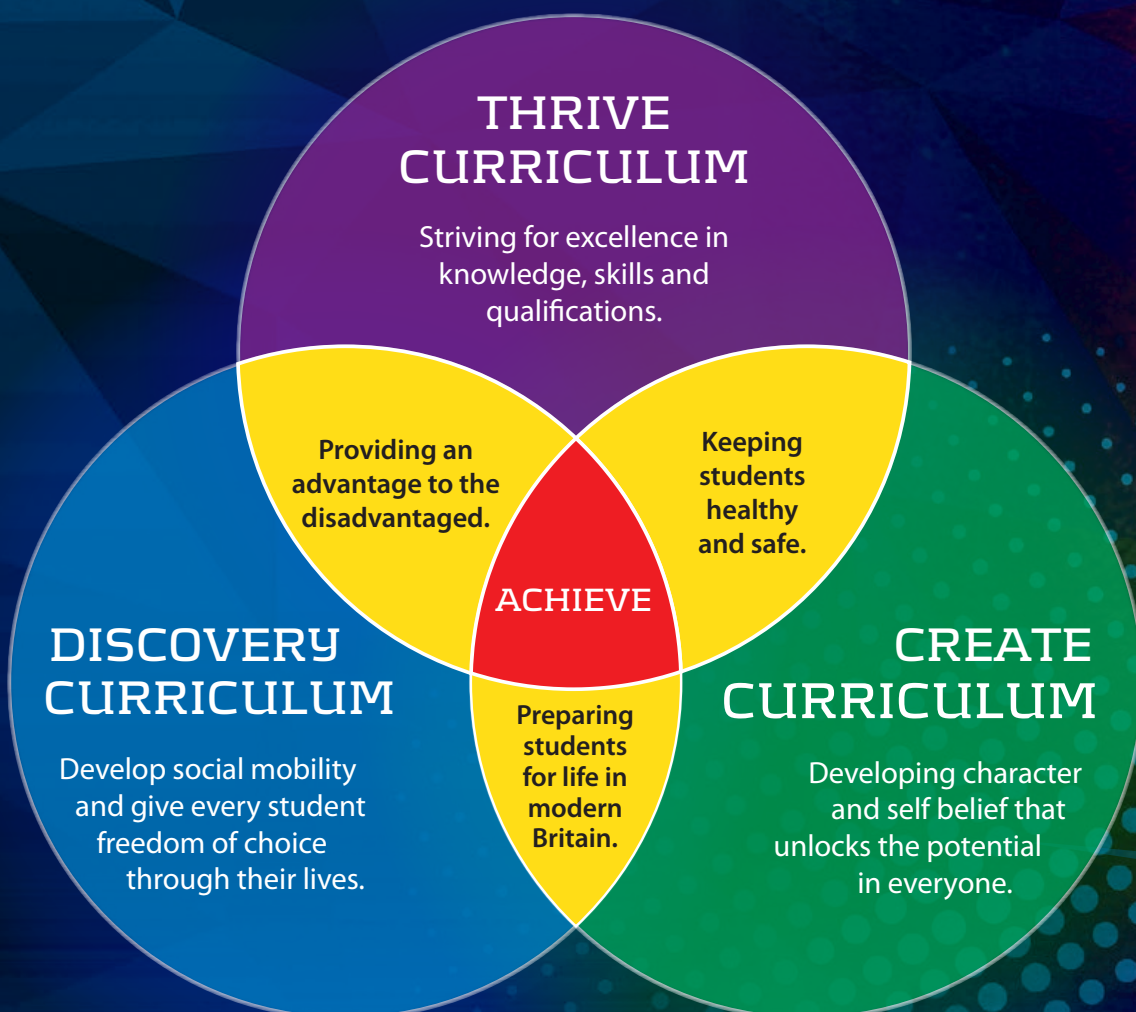
We are determined that all our pupils enjoy their learning and do their very best."

Mrs R Berton
Chair of Governors, Cliff Park Ormiston Academy.

At Cliff Park Ormiston Academy, we strive to prepare all students to become well-rounded, hard-working and courteous individuals who have the knowledge, skills and determination to meet the challenges they will face both now and in the future.

In partnership with families and our community, our aim is to provide relevant, personalised learning experiences for students, both inside and outside the classroom, that encourages them to value and respect each other, and become ambitious, resilient members of society.

Strand	The Aims of the Cliff Park Curriculum
Thrive	Knowledge that changes children's perceptions, values or understanding (powerful knowledge)
Create	Developing character and self-belief that unlocks the potential in everyone. Being able to make best use of qualifications.
Discover	Develop social mobility and give every student freedom of choice through their lives. Having understanding and opportunity.
Character/ Culture/ Achieve	Developing skills to stay healthy and safe. Personal, Social, health and economic understanding and sex and relationship education.



THRIVE



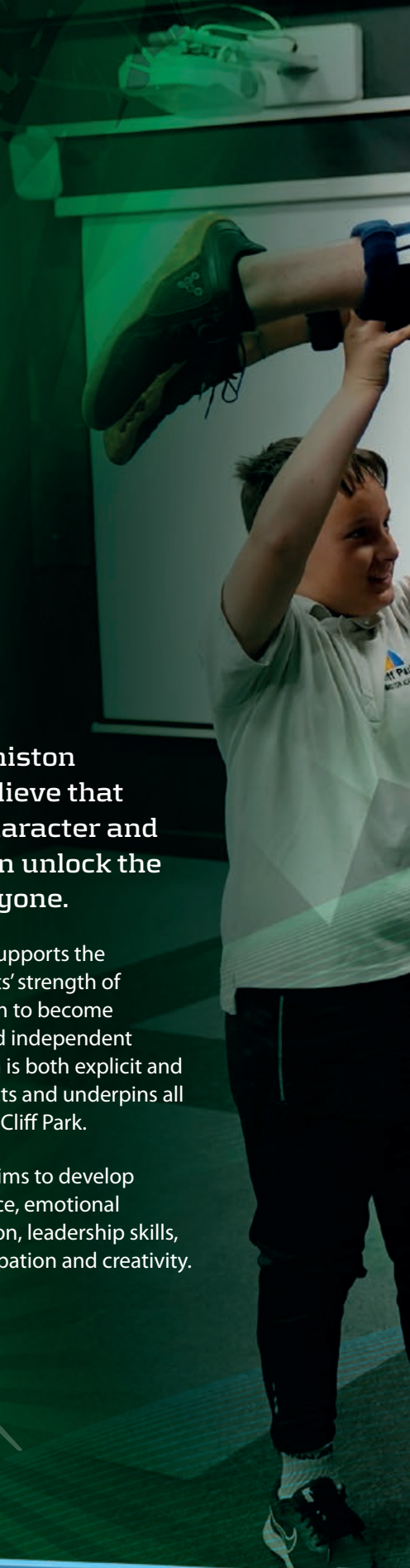
Our lessons are led and supported by highly trained, passionate professionals who are genuinely ambitious for every student. We want your child to enjoy learning whilst realising his or her full potential. Our personalised approach and innovative curriculum gives students ownership of their learning and helps them to achieve their goals.

The Key Stage 3 curriculum is designed to introduce students to a range of subjects, encouraging independent learning and critical thinking in preparation for GCSE. Students join the Upper School in Year 10 where they begin to select their options. We offer a healthy mixture of modern vocational subjects, relevant to contemporary life and future employment as well as traditional GCSE subjects which equip students for further study.

Our Thrive curriculum strives for excellence in critical thinking, knowledge and academic achievement.

Our curriculum is based on the National Curriculum, is ambitious, innovate and stimulating for all of our students. By teaching the best that has been thought, said and written, we provide our students with a secure foundation upon which to continue their studies into further, higher education, apprenticeships and careers of their choice.

CREATE



At Cliff Park Ormiston Academy, we believe that by developing character and self belief, we can unlock the potential in everyone.

Our Create curriculum supports the development of students' strength of character, enabling them to become empathetic, resilient and independent learners. This curriculum is both explicit and implicit within all subjects and underpins all educational activities at Cliff Park.

The Create curriculum aims to develop resilience, self-confidence, emotional wellbeing, self-motivation, leadership skills, teamwork, wider participation and creativity.



DISCOVER



“Pupils learn in a supportive and purposeful atmosphere because relationships are strong between them and their teachers.”

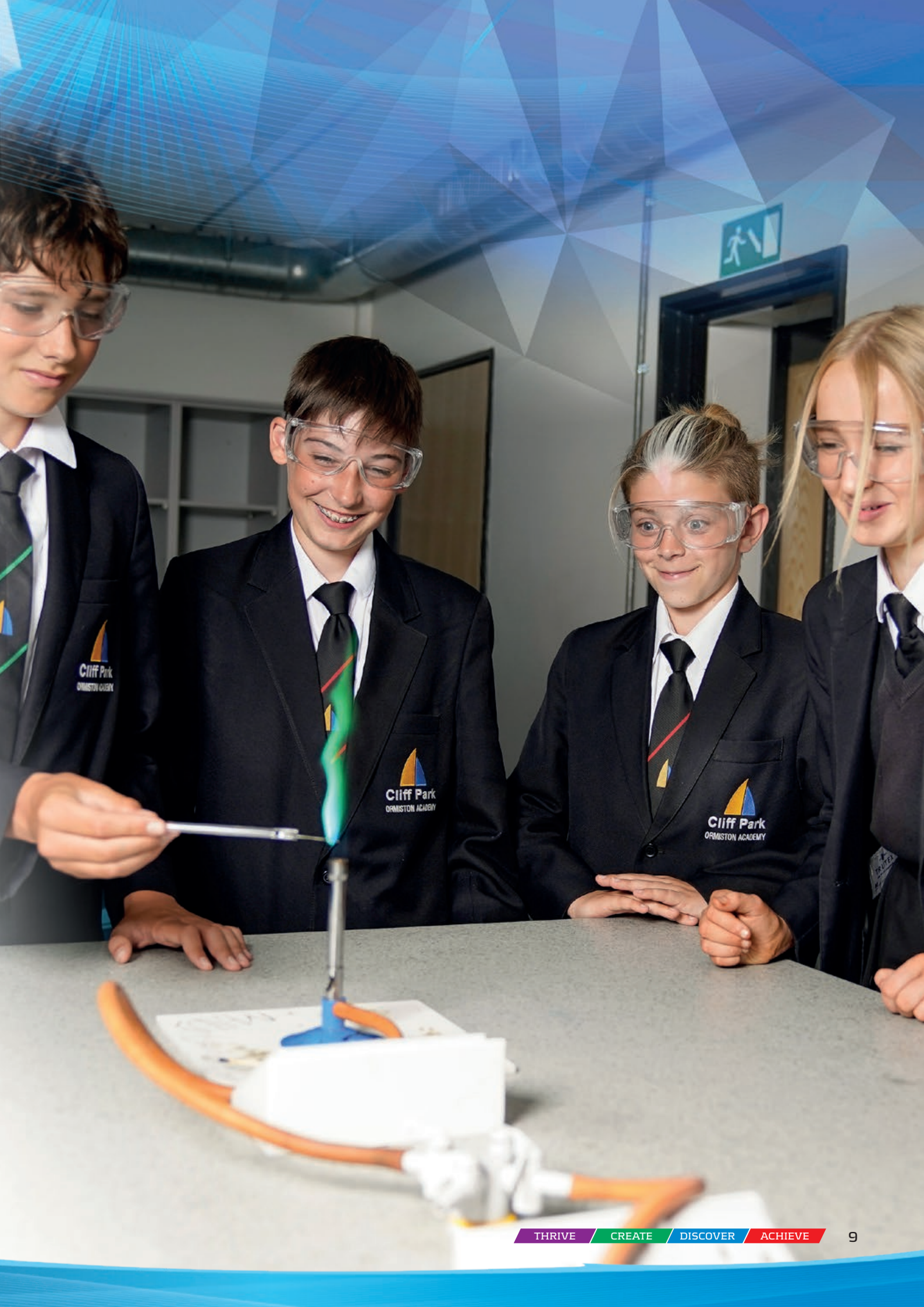
“Pupils say that the school is safe. The Discover Curriculum enables students to build a portfolio of experiences throughout the year, helping develop personal and academic skills.”

The Discover curriculum presents opportunities that will enrich students' learning and future pathways. Our Discover curriculum includes:

- Careers education, information, advice and guidance.
- Providing students with opportunities that they may not have previously encountered, including trips and visits.
- Creating opportunities for students to continue their learning outside of the classroom through enrichment and home learning opportunities.

Learning does not begin and end at the academy gates however. The University of East Anglia, East Coast College, East Norfolk Sixth Form and Norwich City's Community Sports Foundation are just some of our strategic partners and all of our students regularly participate in trips, work placements and activity days. By adding real value to what is learned in the classroom, these initiatives help to make lessons fun and bring learning alive.





Cliff Park
ORMISTON ACADEMY

Cliff Park
ORMISTON ACADEMY

Cliff Park
ORMISTON ACADEMY

ACHIEVE



Cliff Park Ormiston Academy is a calm, purposeful and supportive environment which inspires learning. It is essential to us that, from day one, your child feels welcome, cared for and part of our community.


We have strong pastoral systems and an ethos of high expectations. We engender a culture of mutual respect, encouraging and rewarding students in many ways. Our approach instils the self-belief which is key to success in life after school.

Through our pastoral system, we encourage friendship and healthy competition. Students are placed into a tutor group which are organised within year groups. We run a variety of whole-school challenges and students are encouraged to win positive points through excellent attendance and behaviour.

Our after-hours facilities include a floodlit astro-turf pitch and state-of-the-art sports hall where we offer an enormous range of intervention groups and extracurricular activities. These include our student leadership programme which enhances and improves the learning experience of all students, encouraging them to contribute positively to the wider life of the academy.

Whether a student directs a play, captains a sports team or sits on our active "student voice", there are countless opportunities to acquire life-long skills, such as leadership, teamwork and initiative-taking.





“Behaviour is good. Pupils are respectful and courteous towards staff and their peers. They like school and attend regularly.”

“Pupils say that the school is a safe and enjoyable place to be.”

Cliff Park
ORMISTON ACADEMY



Kennedy Avenue
Gorleston-on-Sea
Great Yarmouth
Norfolk NR31 6TA

Tel: 01493 661504
Email: office@cliffparkoa.co.uk

Visit our website to find out further information.
Please scan the QR code with your phone/tablet
or enter the web address below.

www.cliffparkoa.co.uk



www.ormistonacademiestrust.co.uk

THRIVE

CREATE

DISCOVER

ACHIEVE